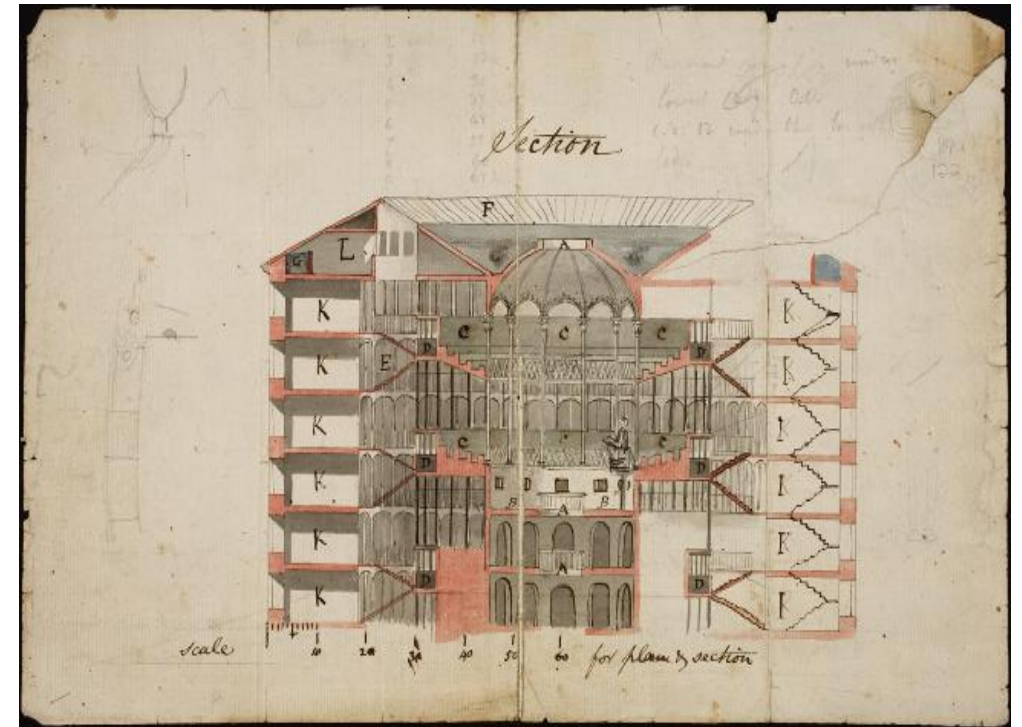


LCCOS

10 March 2022

1. Introduction and Library overview (Martin Moyle)
2. Library academic support services (June Hedges)
3. Open Science (Paul Ayriss)
4. UCL Culture overview (Frank Pentter)
5. Research culture (Emma Todd)
6. Space strategy (Ben Meunier)



LCCOS - Library, Culture, Collections and Open Science

Established Dec.2021, bringing together:

- Library Services
- UCL Culture
- Research Integrity
- Research Culture
- Open Science

Headcount: approx. 440

Organisational [chart](#)



Libraries and learning spaces

- 13 libraries, including 5 joint-NHS libraries
- Student Centre
- 1-19 Torrington Place and other learning spaces
- 3 Special Collections reading rooms
- Store – 61km of off-site storage at Wickford
- Coming soon: UCL East
- Extensive opening hours, some 24/7

There were 4.8 million visits to UCL libraries in 18/19 – the busiest HE library service in the UK



Collections

- Over 2 million print items
- Internationally important collections - Education, Archaeology, Slavonic and East European Studies, Hebrew and Jewish Studies...
- 'Click and Collect' and on-demand scanning services
- Digital-first collecting policy agreed 21/22
- Digital library: 86,000 e-journals; 1.13 million e-books; 800+ databases
- 275,000 print loans in 18/19 (last full year pre-pandemic)
- 12.9m e-journal downloads and 4.5m e-book downloads in 20/21



Special Collections



We manage, conserve and make accessible 10,000 metres of rare books, archives and records, from medieval to modern, run the records management service for UCL and have 3 supervised reading rooms for researchers



In 2020/21 we delivered 69 classes at UCL, reaching a total of 1858 students and participated in 48 academic events, attended by a total of 7,774 people



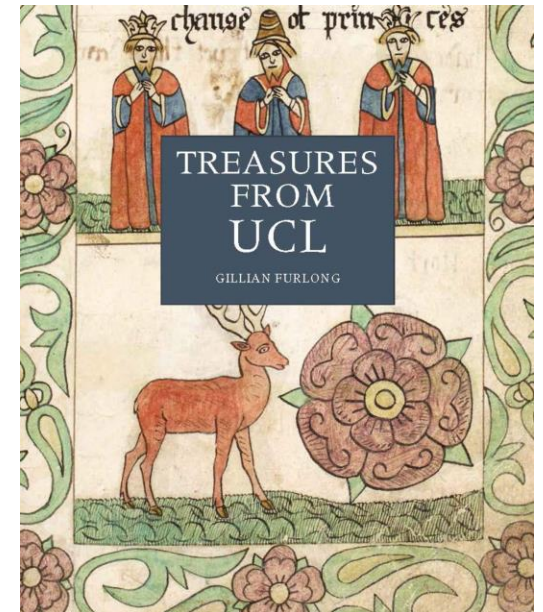
In 2020/21 we delivered 66 workshops to schools and community groups in Camden and East London, reaching 776 attendees



Our digitisation team produces online content for research, teaching and exhibitions. In 2020/21 our digital resources were viewed 34,644 times



Our collection and technical specialists support academic research across UCL, including the Special Collections Fellowship and the Research Institute for Collections



Selected measures

Student satisfaction, 2021

- NSS: 79.9% - down on 2020 (88.5%) but still above sector average
- PTES: physical library 52.9%, online library 86.4%
- PRES: physical library 66%, online library 89%
- This discrepancy not just 'the Covid effect'

Open Access

- UCL faculty compliance with REF OA Policy: 88-96%



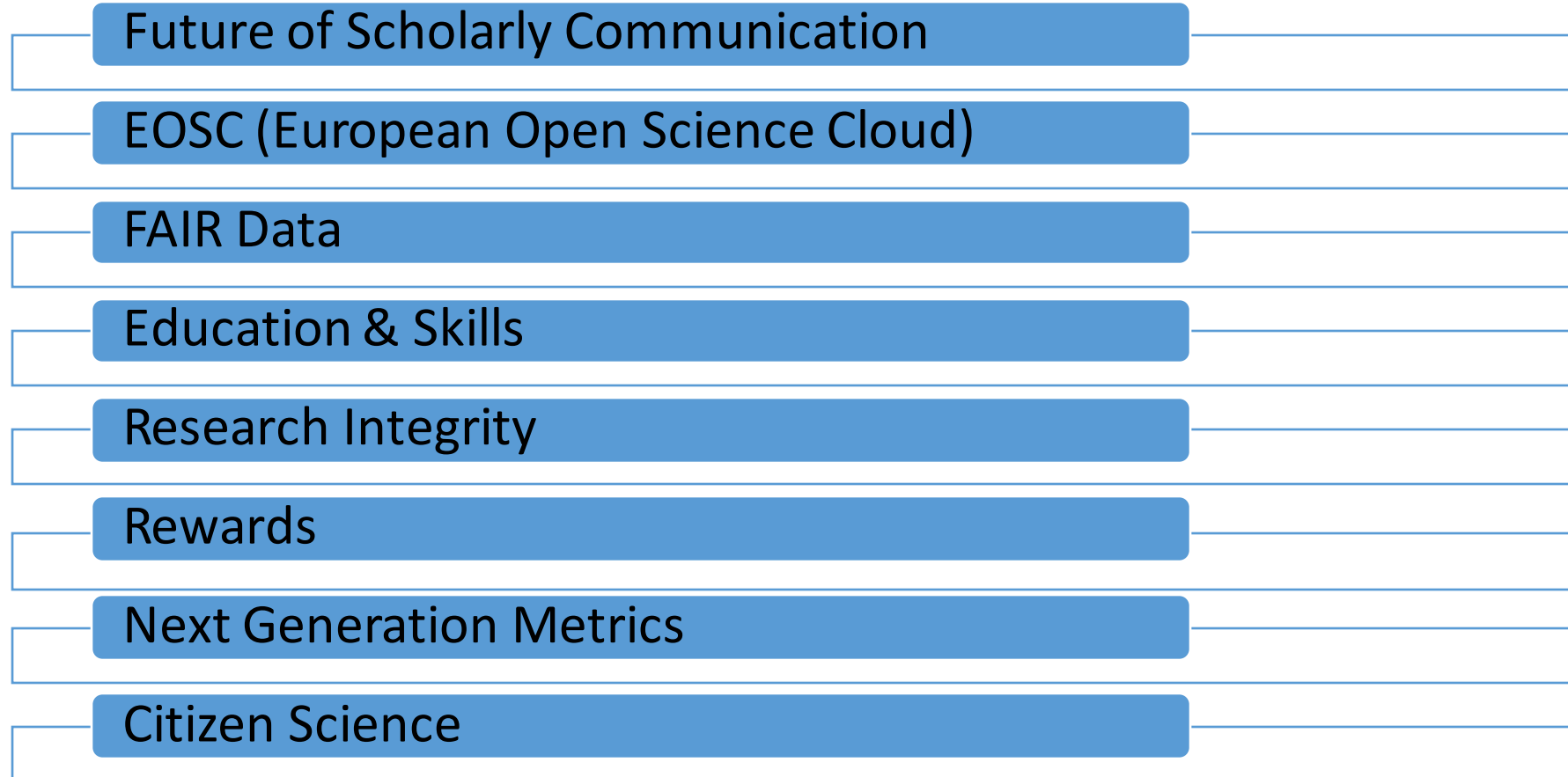
<u>Academic Engagement</u>	<u>Library Skills</u>	<u>Teaching & Learning Support</u>	<u>Open Access Services</u>	<u>Research Data Support</u>	<u>Bibliometrics Support</u>	<u>Open Science</u>	<u>Research Integrity</u>
Lindsay Ure	Angela Young	Hazel Ingrey	Catherine Sharp	Kirsty Wallis			Rowena Lamb

OVPESE / ARC / Education Domain / Arena / SRS / Doctoral School / Research Services / OD / RICs / Research Strategy & Policy / Research Reporting & Evaluation / Faculties and Departments / UCL East / UCL Legal... probably more I've missed.

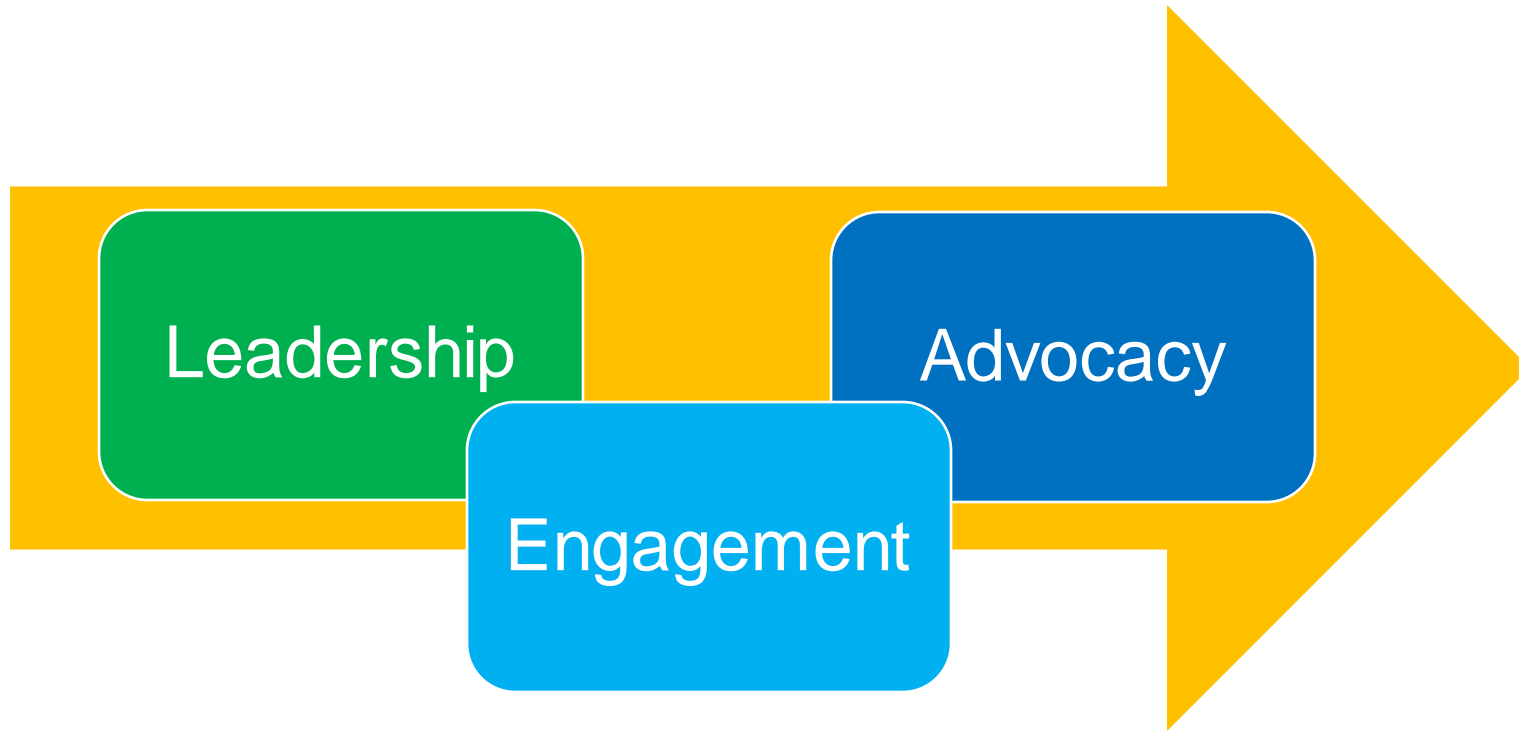
Open Science: international context and UCL strategy



8 pillars of Open Science in Europe



UCL Office for Open Science



Open Science activity

Webinars

Project memberships

UCL Policy development

Co-ordination point for UCL Open Science communities at departmental level

Operating Plan

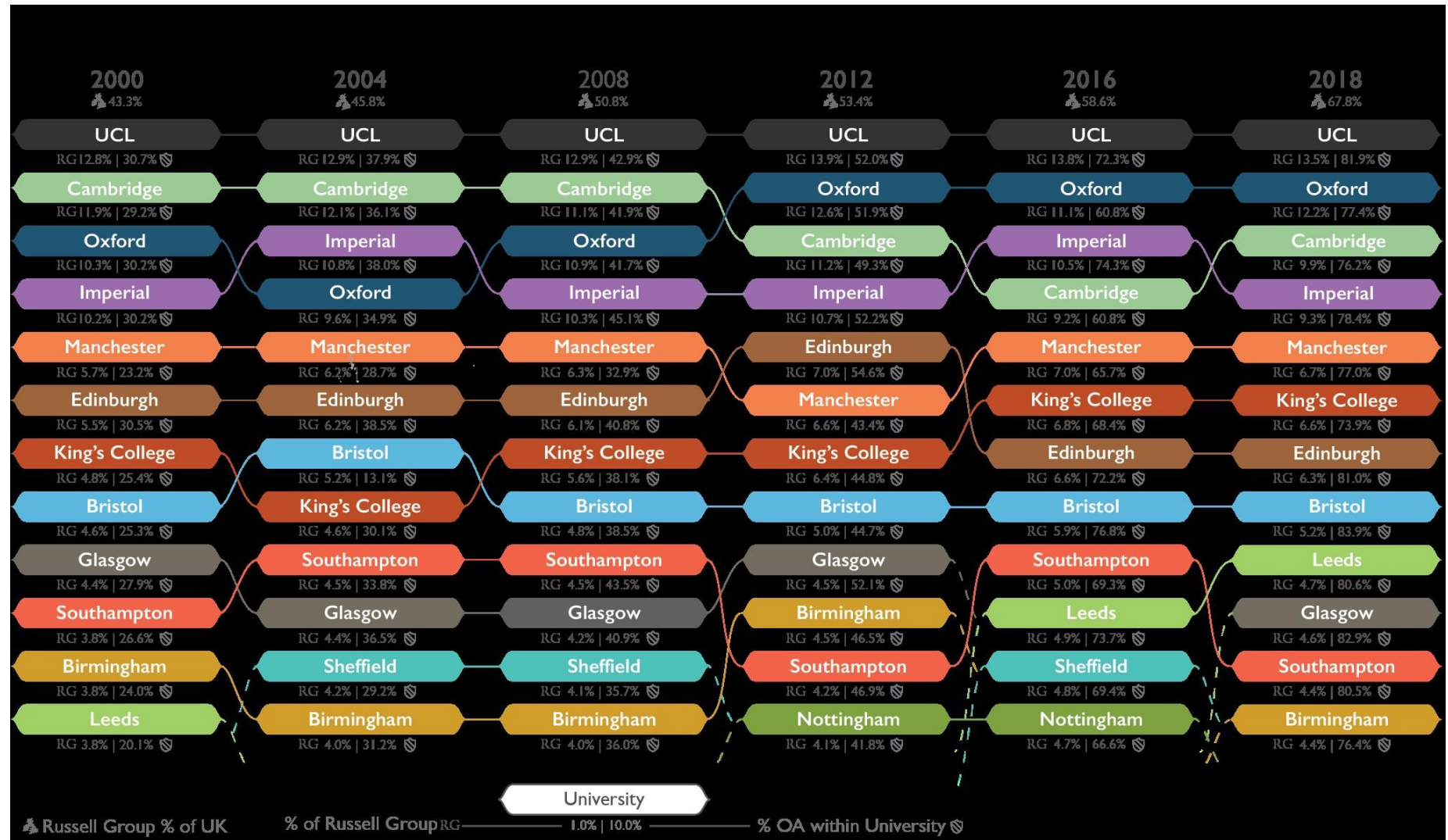
Regular communications activity

Annual Open Science Conference

Services committee structures

Open Science and Scholarship

- Digital Science shows UCL as a UK leader in Open Access over 2 decades



Explore download statistics for UCL Press books. For more information on how we collect and record our data, [click here](#).

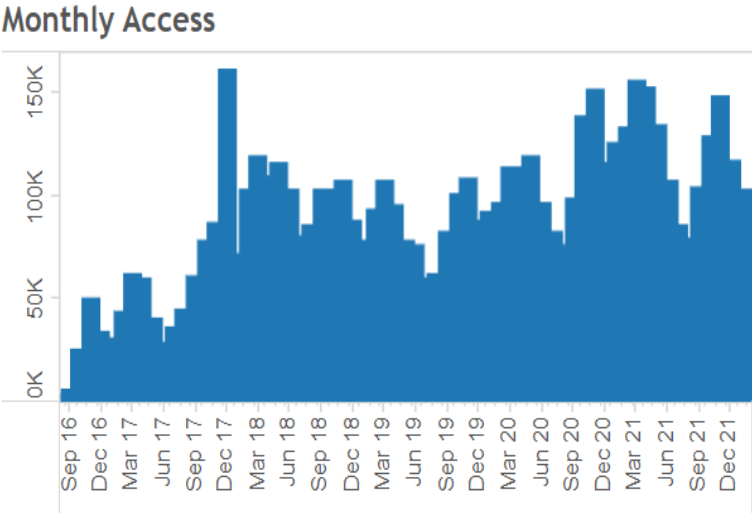
Total Access
5,662,905

Countries and Territories Reached
246

Print unit sales total
31,013

Published Titles
224

Please Choose a Title or Select All
 (All)



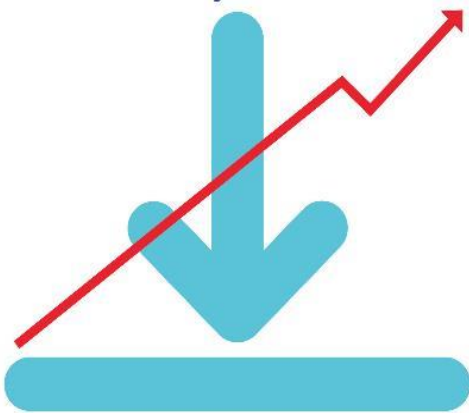
Global Reach



Use & Impact

5 million+

downloads
since June 2015






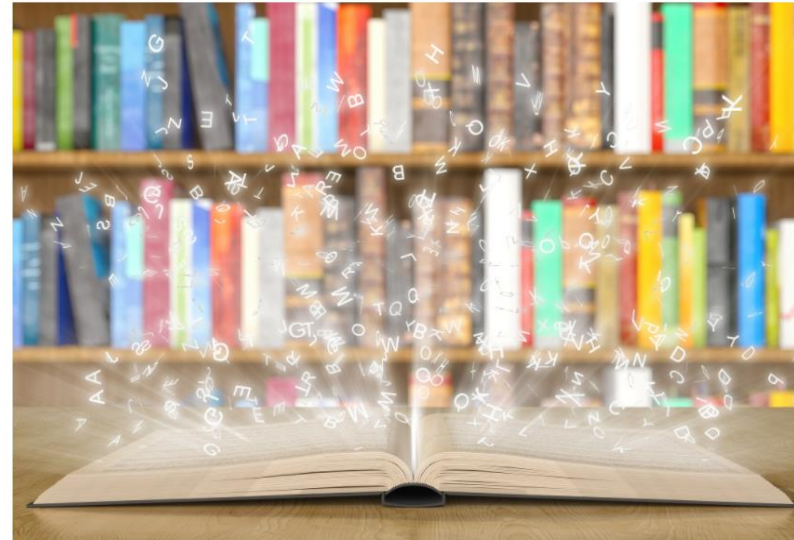
**246
countries**

Further Reading

- Open Access (2011) - <https://www.leru.org/publications/the-leru-roadmap-towards-open-access>
- Research Data (2013) - <https://www.leru.org/publications/leru-roadmap-for-research-data>
- Open Science (2018) - <https://www.leru.org/publications/open-science-and-its-role-in-universities-a-roadmap-for-cultural-change>
- Implementing Open Science (2021) - <https://www.leru.org/publications/implementing-open-science>

Open Science and its role in universities: a roadmap for cultural change

	Year of publication:	May 2018
	Type of paper:	Advice paper
	Author(s):	<ul style="list-style-type: none"> › Paul Ayris (University College London) › Alea López de San Román (LERU Office) › Katrien Maes (LERU Office)
		+ See all





Museums, Collections, Public Programme, Theatre and UCL Engagement



Management of UCL's cultural venues

UCL Art Museum

Petrie Museum of Egyptian and Sudanese Archaeology

Grant Museum of Zoology

Pathology Museum

Object Based Learning Laboratory

Bloomsbury Theatre

Bloomsbury Studio

Octagon Gallery

Management of UCL's collections

Museum collections

Science Collection (including Galton)

Jeremy Bentham

Over 160k objects in total

collections.ucl.ac.uk

108k visitors pre-Covid*

60k paid tickets valued at £680k

*: Art/Petrie/Grant/Theatre only

Teaching

- Multidisciplinary approach i.e. Art Collection used in language teaching and Petrie Collection in law
- Over 5000 student uses of collections per year
- 130 HE sessions hosted and supported
- 29 student placements



Research

- The Petrie has the bulk of research visits – Term 1: 32 researchers from 5 different countries who accessed 272 objects (11 UCL) and 369 research enquiries, of which 304 were from outside UCL
- Zoology 103 research enquiries,
- Science 82
- Art Collections 50



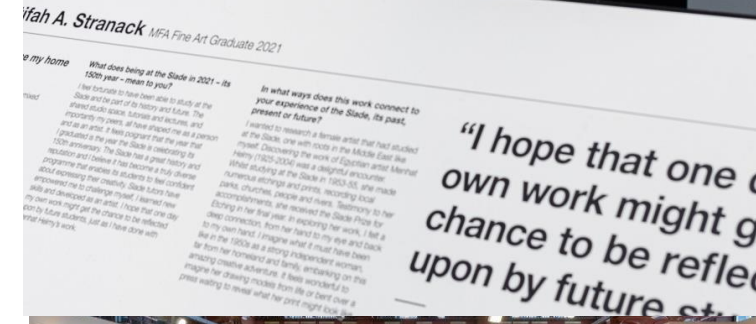
Theatre

- 1300 students a year participating in co-curricular activity
- Time also allocated to UCL Department activity (such as Slade, Greek and Latin) and Performance Lab
- Curated programme of commercial activity to offset some cost



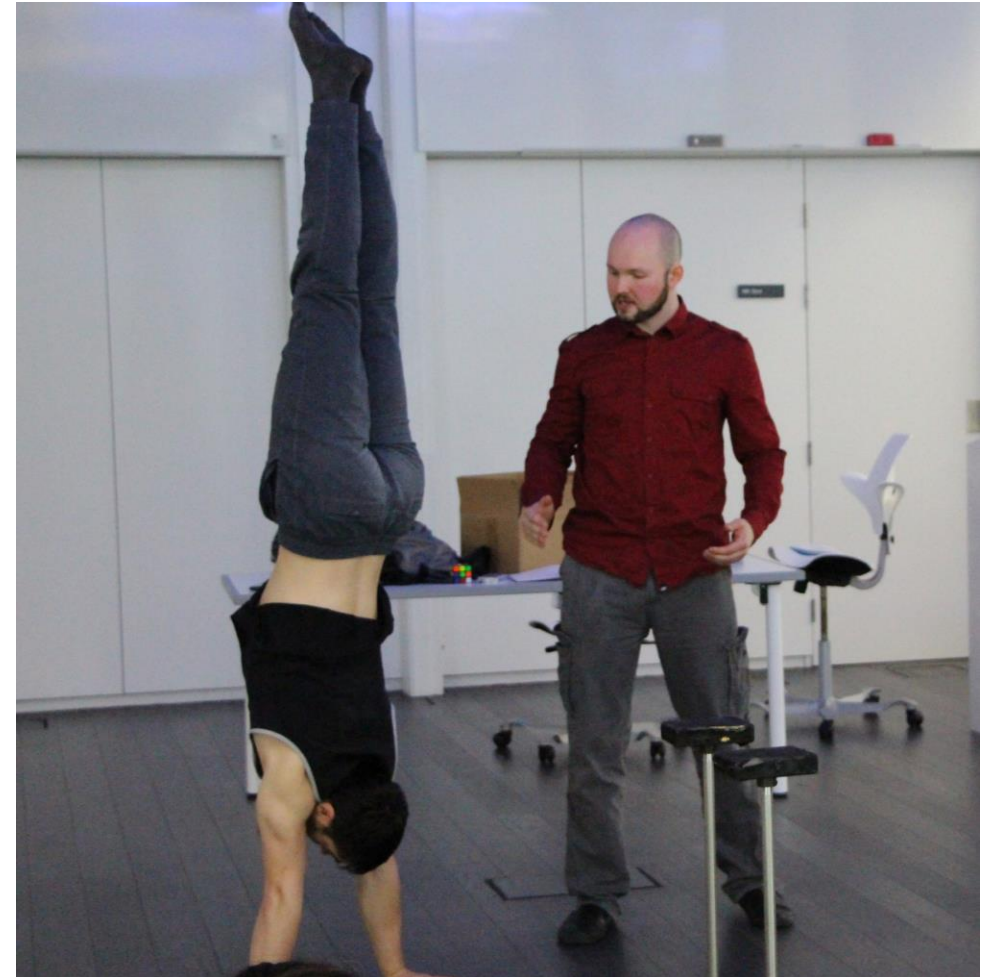
Programmes and Exhibitions

- Events around museums and the broader campus engaging with publics, research, students and communities
- Performance Lab activity utilising performance as a tool to engage with researchers and communities
- Exhibitions highlighting research in the Octagon and supporting UCL community led exhibitions in the Cloisters



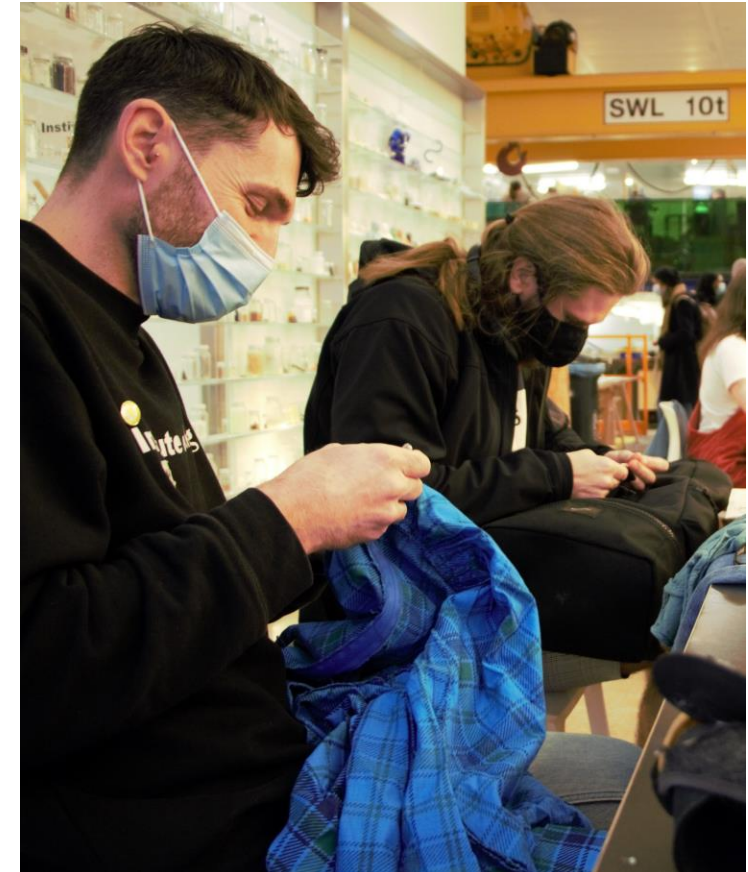
UCL Engagement: Enabling brighter ideas through deeper connections

- We are here to spark connections between people and ideas.
- By connecting research and teaching with communities and people, we create the momentum for positive change.
- We inspire conversations and showcase how to ensure that every voice counts. We champion collaborations so that everyone can engage with the ideas that can help us build a better society together.



What the Public Engagement team can help with

- Advice and support (embedding engagement in research and teaching)
- Funding
- Training (including asynchronous training)
- Evaluation support and guidance
- Opportunities to try out engagement
- Internal and external networks
- Reward and recognition (Provost's Awards, careers and progression)
- Help to develop strategic approaches to engagement



Training

Find Your Voice/Intro. to Public Engagement

Train and Engage (PhD students)

Public Engagement Skills and Practice
(Research Staff/ PS Staff)

Online public engagement course (All)

Bespoke Training

Funding

Beacon Bursaries (£ max. 2k)

Train and Engage (£ max. 1k)

Listen and Learn (£ 500)

Support for public engagement
bids/elements of bids

REF case study support



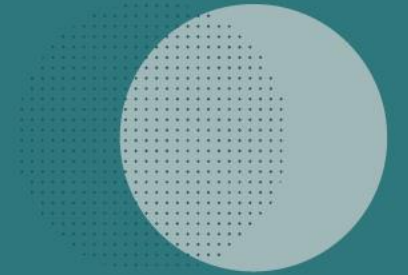
Co-producing change together



Vision

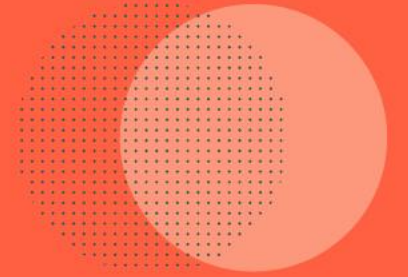
Our vision is a world where diverse knowledge and experience is recognised and valued in the co-production of research.

....and beyond



Mission

We are a co-production community where everyone is welcome. Together, we learn, connect and champion co-production to create lasting change.

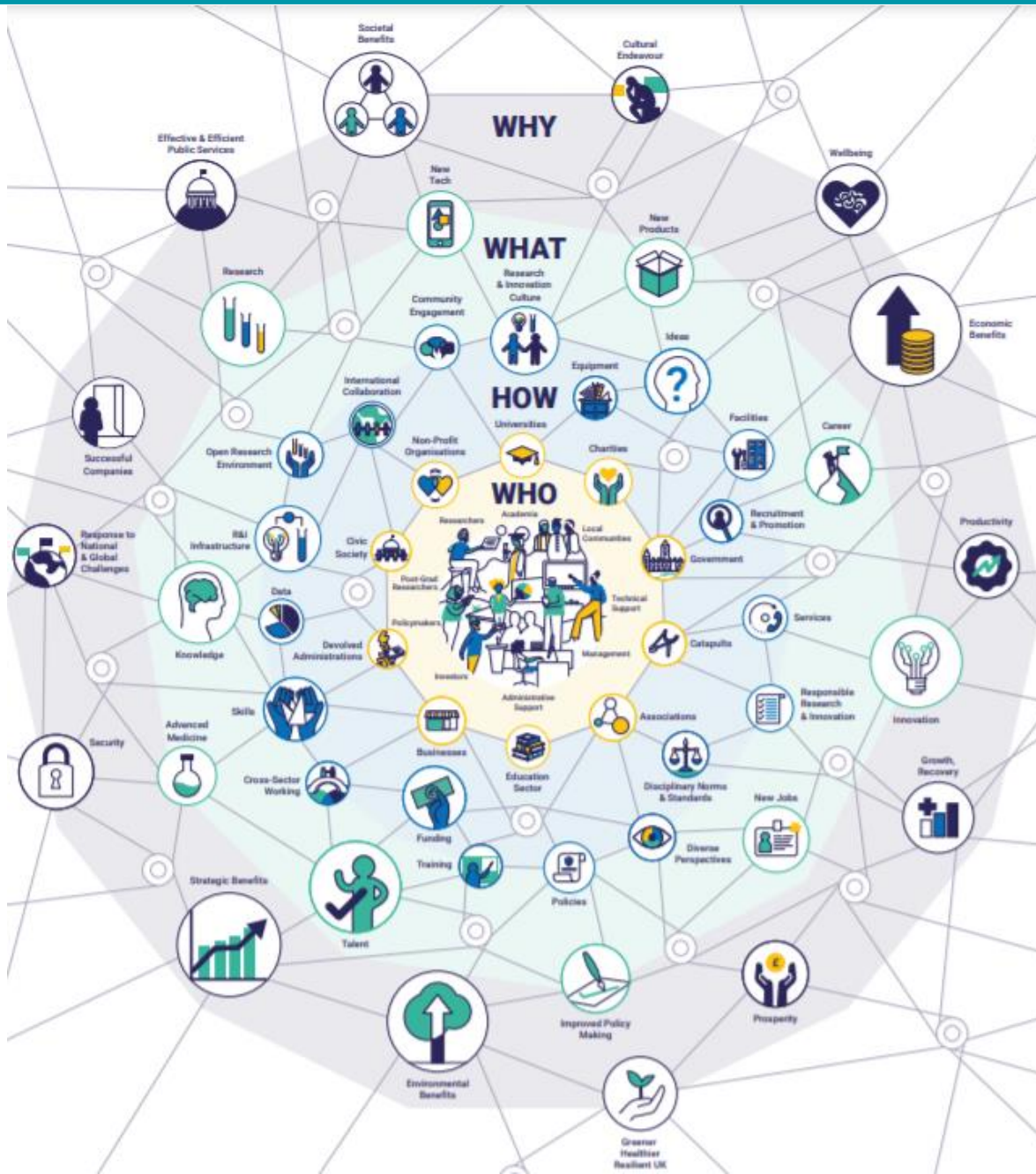


- **With a strong track record of co-producing its own strategy, policies and identity, we offer co-production training, facilitation and resources for those looking to embed co-production in their work.**
- **We are increasingly asked to act as Co-Investigators on UCL-led research grants.**
- **We are informing curriculum delivery of some of UCL's most innovative postgraduate programmes**
- **We are being asked to work with new UCL initiatives to embed co-production into their organisational thinking and curricula from the outset**
- **We sit on elements of multiple external bodies who value our expertise to advance their own organisational journey and participatory practice.**



RESEARCH

CULTURE



REF2021 Research Excellence Framework



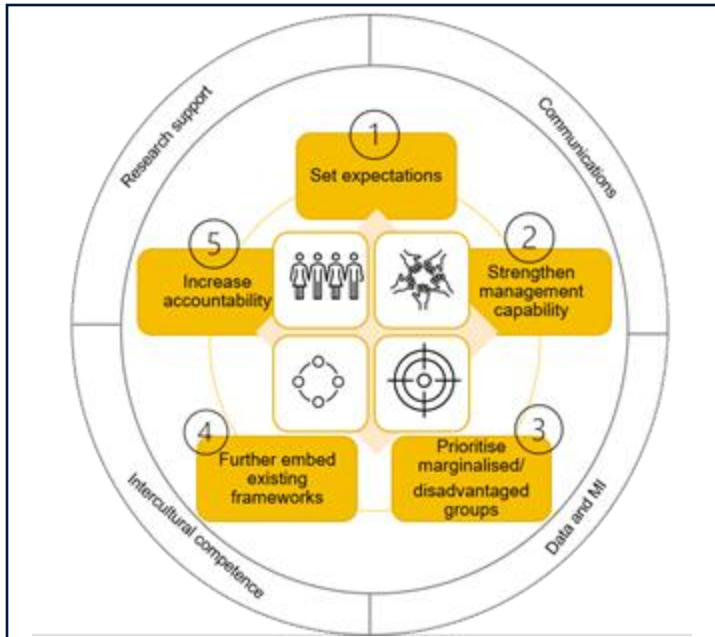
UK Research and Innovation



The Concordat
to Support the Career Development of Researchers



UK Research Integrity Office



Consultation

- 2.4k survey responses, 30 hours of focus groups & semi-structured interviews with 135 member of the research community.
- Leading to findings and recommendations for research culture at UCL.

£1.075m

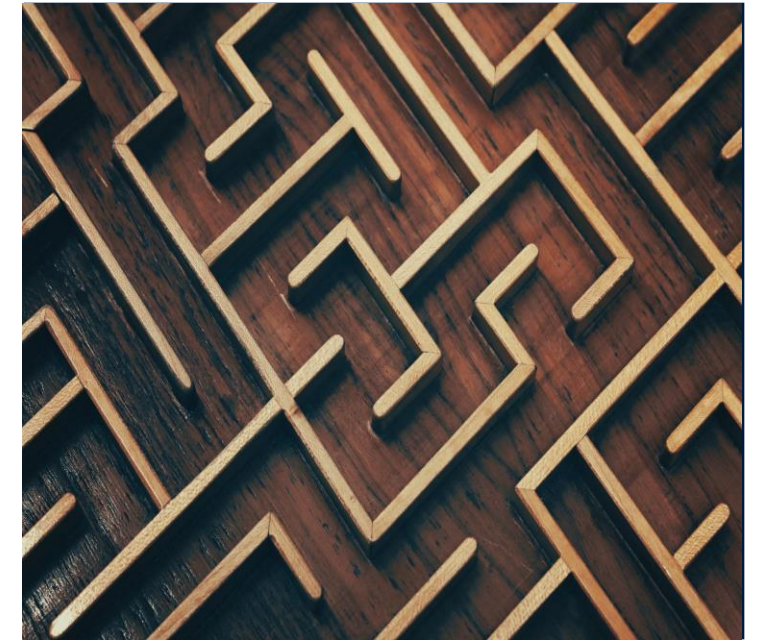
39 projects

Aligned
with UCL
priorities

Deliver by
31 July '22

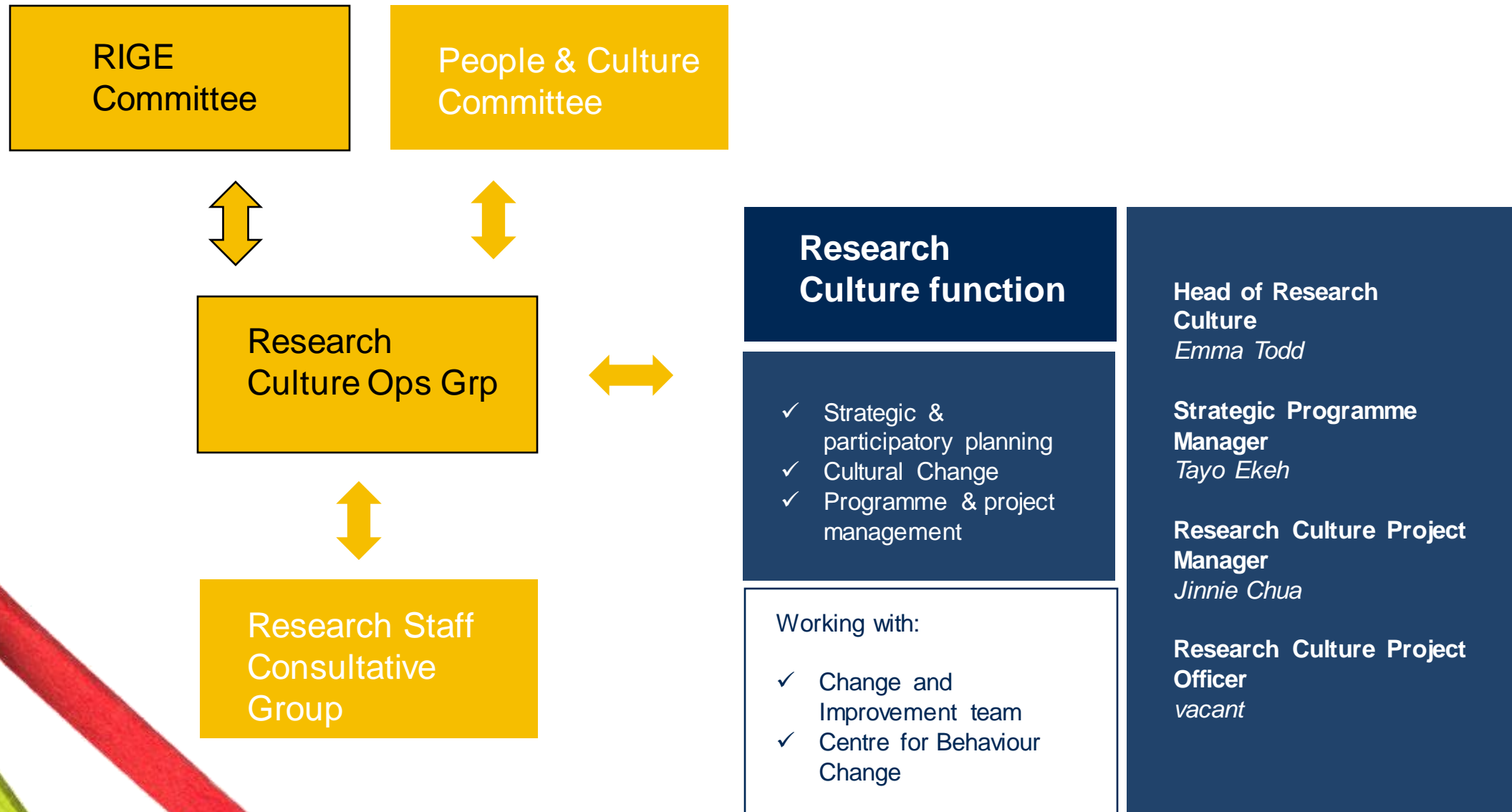
Action

- Enhancing Research Culture Programme.
- Funded through Research England.
- Internal allocation for central and local projects.
- Bringing forward recommendations & piloting new approaches



Roadmap

- Inter-generational values-driven culture change programme.
- Bringing together strands of existing activity and agreeing strategic focus.
- Drawing on behavioural science expertise within UCL.





Learning and research spaces for UCL



- Create “a portfolio of discrete, interrelated learning environments, offering spaces with a clear identity and encouraging students to translate their learning preferences into space selection.” (fostering sense of belonging for students, e.g. for PG students, but also encouraging cross-disciplinary working)
- Extend the shared services model based on hubs/Student Centre/UCL East approach, creating a local hub for students, e.g. within each Faculty
- Concentrate print stock in fewer sites (currently 17) to allow world-class user experience (24-hour opening, faculty identity, access to specialist services and resources including unique print collections) and improve financial and environmental sustainability. This could be complemented by Library-managed learning spaces
- Seeking to establish a UCL Special Collections facility to exploit the exceptional institutional assets, particularly for cross-disciplinary research work. This could be linked to a wider Arts & Humanities and Social Sciences hub

Libraries as portals between UCL and local communities

- Libraries provide a familiar access point for audiences which may be unfamiliar with Higher Education, supported by dedicated Outreach staff
- Use of collections/Object-Based Learning (OBL) is a compelling attraction to draw in schools and members of the public (on campus and beyond, e.g. Library Services with schools and local communities in Newham). Seeking to create more dedicated OBL space, given demand from UCL academics and potential uses for outreach
- The growth of Citizen Science activity online can be complemented by on-site activity in London, e.g. via exhibitions or recording/digitisation facilities (e.g. Oral History recording at UCL East)
- As part of research-based education, students are encouraged to engage with the world (Fung, 2017). Libraries can help bridge the gap with “the outside world”.
- Opportunities for collaboration with academic departments and UCL Culture, embodying civic university ideals



Worlds of UCL class today we have such a treat of art, objects, rare books & maps @UCLSpecColl @UCLArtMuseum @GrantMuseum @UCLRecords @SurveyofLondon



2:05 PM · Feb 5, 2020 · Twitter for iPhone

6 Retweets 20 Likes

