

Designing an exhibition

Subhadra Das

Curator,

Teaching & Research Collections

UCL Museums & Public Engagement

Why Exhibit?



Why exhibit?

message

- TO SHOW OFF
- To educate and inspire
- To share objects and experiences

Disposal?

What is Disposal?

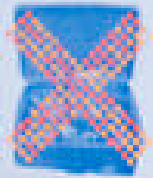
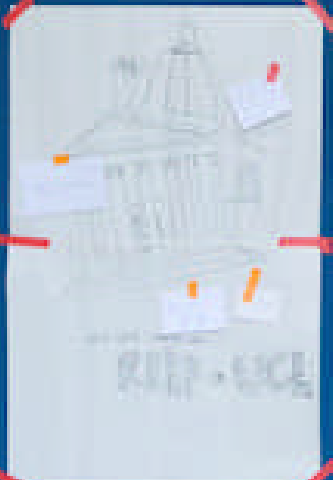
Disposal is the permanent removal of an object from a museum or collection. Objects can be exchanged, given as gifts, sold, recycled or destroyed.

We all know it can be difficult to part with our stuff, even to a good home. Museums find it difficult to dispose of things too. People expect them to keep things for future generations, but they can't keep everything.

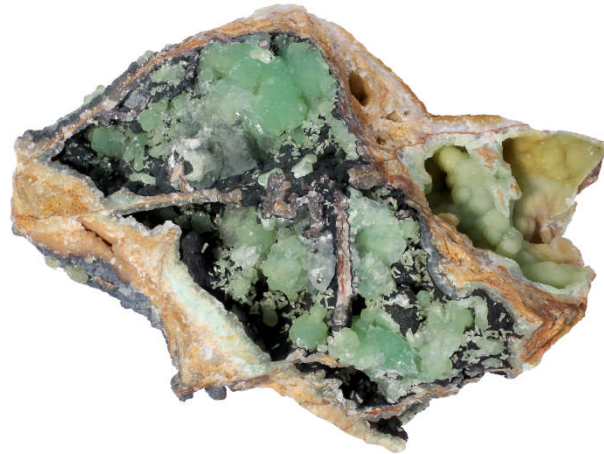
Universities collect things too. Since UCL was founded in 1826, people have been collecting things to support teaching and research. Some of these now form important collections.

Other things are no longer useful. Some are too big or damaged to be housed safely and some should never have been collected. In the past such things have sometimes been disposed of thoughtlessly - by putting them in the skip.

This exhibition is about thoughtful disposal.











Why exhibit?

message

- Come up with a title and a tag line for your exhibition



**Rethinking what to keep
in UCL Museums & Collections**

Help us decide

What ideas and themes are you going to present?

What is disposal?

1. What should we be collecting?
2. Should we dispose of objects that are too large to store?
3. Should we dispose of duplicates?
4. Should we dispose of objects in poor condition?
5. Should we dispose of hazardous objects?
6. Should we dispose of objects we know little or nothing about?
7. What is useful?
8. Who decides what goes into or comes out of a collection?



What ideas and themes are you going to present?

- **Design a framework for your exhibition and list the way your ideas will be presented.**

How are you going to illustrate those questions and themes?

content



How are you going to illustrate those questions and themes?

➤ **Draw up a working object list for your exhibition**

design





Doctors, Dissection and Resurrection Men, Museum of London 2013

What's it all going to look like?

design

- **Make a list of 3 word or phrases that encapsulate how you want your exhibition to look and feel like.**

things for future generations, but they can't keep everything.

Universities collect things too. Since UCL was founded in 1826, people have been collecting things to support teaching and research. Some of these now form important collections.

Other things are no longer useful. Some are too big or damaged to be housed safely and some should never have been collected. In the past such things have sometimes been disposed of thoughtlessly – by putting them in the skip.

This exhibition is about thoughtful disposal.

Who is your exhibition for?

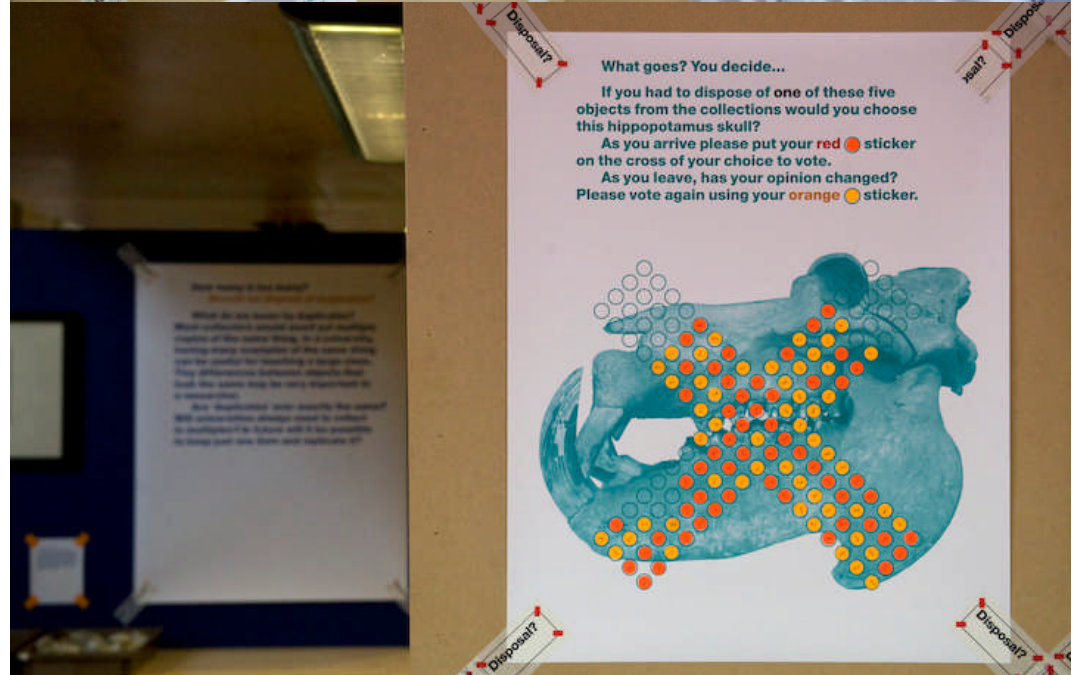
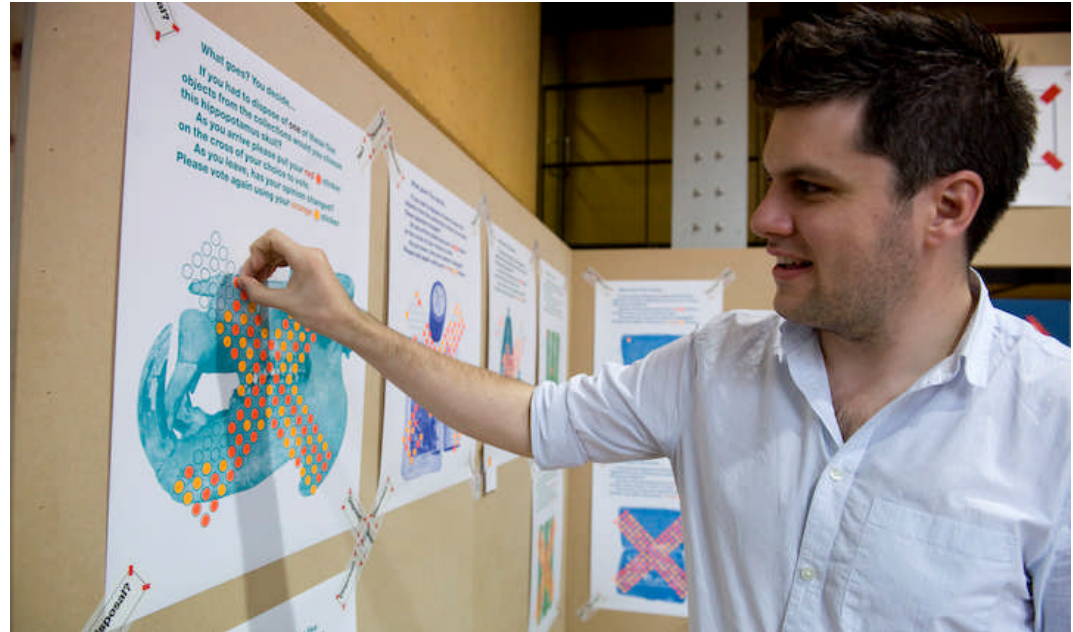
audience

- **List the audiences who you want to reach and communicate or engage with and write a 20-word label for one of the objects in your exhibition.**

How will you know if your exhibition
has been successful?

evaluation





How will you know if your exhibition has been successful?

➤ **List two facets of your audience which you want to monitor and draw up 3 questions for an exhibition questionnaire**

OR

➤ **Design a bespoke evaluation exercise**

**Put 'em all
together and**

what have
you got?

